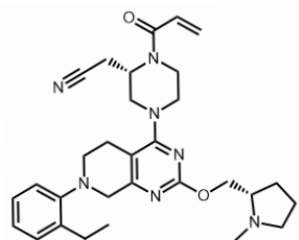


7.720
7.699
7.681
7.661
7.641
7.639
7.451
7.432
7.412
7.395
7.372
7.354
7.334
7.280
7.263
7.260
7.255
7.219
7.216
6.435
6.430
6.426
6.388
5.855
5.828
4.253
4.246
4.201
4.169
4.163
4.152
4.142
4.126
3.925
3.814
3.769
3.553
3.533
3.224
3.199
3.174
3.113
3.090
3.048
3.027
2.934
2.827
2.807
2.672
2.499
2.487
1.781
1.774
1.762
1.744
1.734

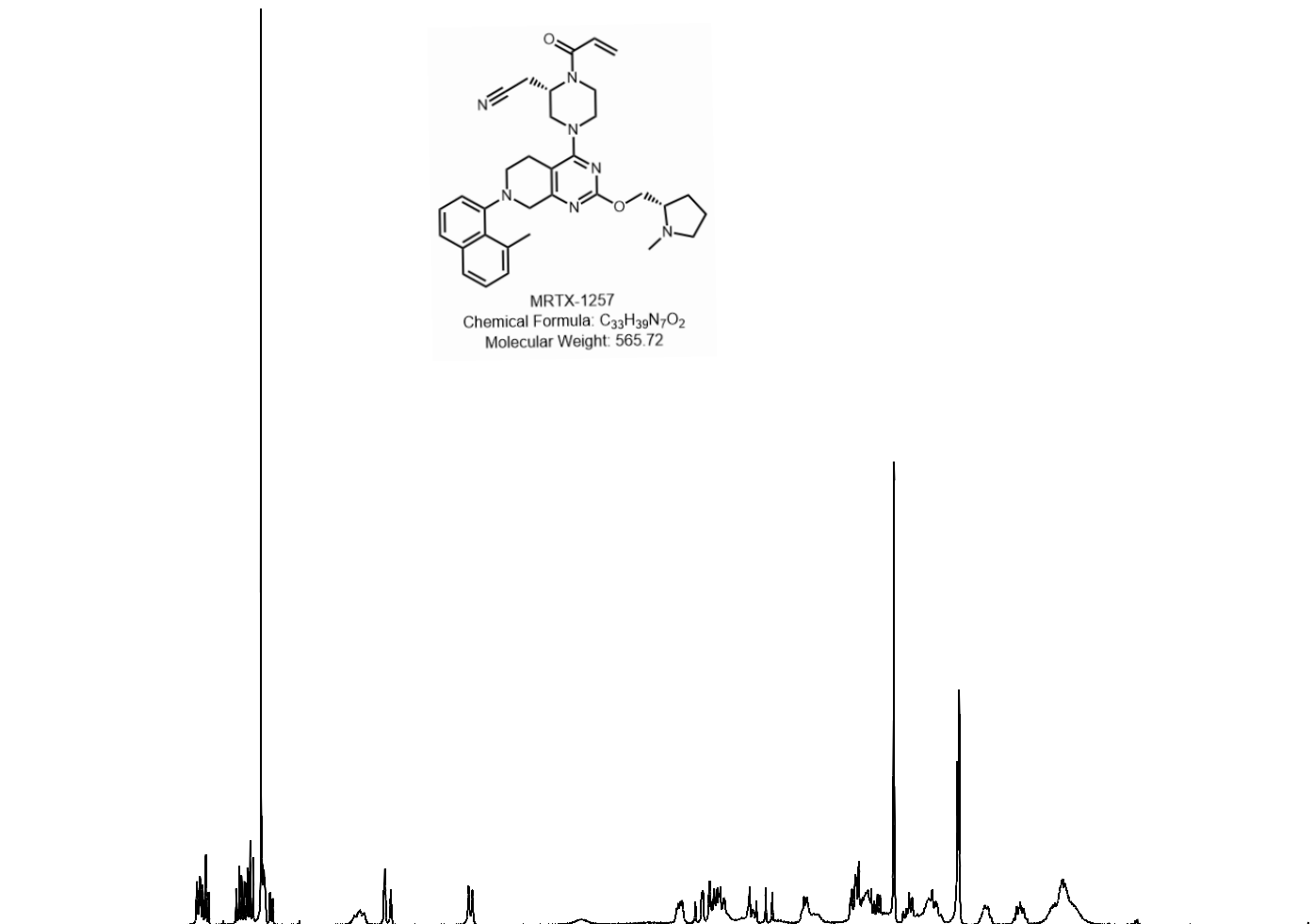


MRTX-1257
Chemical Formula: C₃₃H₃₉N₇O₂
Molecular Weight: 565.72

Current Data Parameters
NAME NSC-819558-I1
EXPNO 1
PROCNO 1

F2 - Acquisition Parameters
Date_ 20190911
Time 16.37 h
INSTRUM spect
PROBHD Z104450_0348 (
PULPROG zg30
TD 65536
SOLVENT CDCl3
NS 64
DS 2
SWH 8223.685 Hz
FIDRES 0.250967 Hz
AQ 3.9845889 sec
RG 144
DW 60.800 usec
DE 6.50 usec
TE 300.5 K
D1 1.00000000 sec
TD0 1
SFO1 400.1324710 MHz
NUC1 1H
P0 4.93 usec
P1 14.79 usec
PLW1 9.92000008 W

F2 - Processing parameters
SI 32768
SF 400.1300090 MHz
WDW no
SSB 0
LB 0 Hz
GB 0
PC 1.00



8.5 8.0 7.5 7.0 6.5 6.0 5.5 5.0 4.5 4.0 3.5 3.0 2.5 2.0 1.5 1.0 ppm

1.0024
0.9733
0.9667
1.2128
1.5060

0.9692
0.9815

1.0000

0.8092

1.1743
1.4601
2.4569
1.4896
1.0774
2.1760
2.2424
3.1637
3.1427
1.3058
2.5251
3.0289
1.0745
1.1120
3.4505
1.7688

7.720
7.699
7.681
7.661
7.641
7.639
7.539
7.451
7.432
7.412
7.395
7.372
7.354
7.334
7.280
7.263
7.260
7.255
7.219
7.216
7.200
7.198
7.016

6.639
6.600
6.572
6.435
6.430
6.426
6.393
6.388
6.384

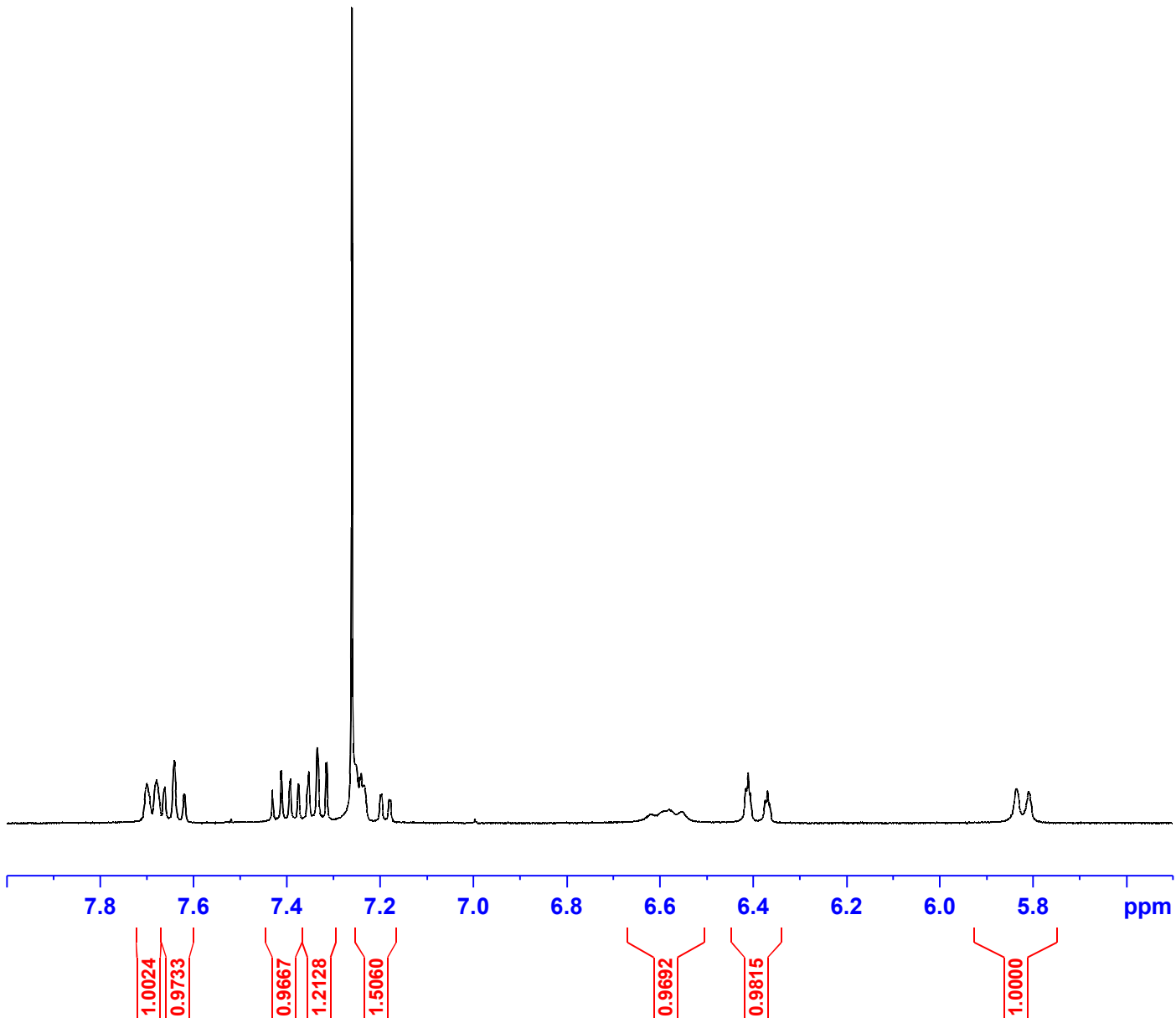
5.855
5.828



Current Data Parameters
NAME NSC-819558-I1
EXPNO 1
PROCNO 1

F2 - Acquisition Parameters
Date_ 20190911
Time 16.37 h
INSTRUM spect
PROBHD Z104450_0348 (
PULPROG zg30
TD 65536
SOLVENT CDC13
NS 64
DS 2
SWH 8223.685 Hz
FIDRES 0.250967 Hz
AQ 3.9845889 sec
RG 144
DW 60.800 usec
DE 6.50 usec
TE 300.5 K
D1 1.00000000 sec
TD0 1
SFO1 400.1324710 MHz
NUC1 1H
P0 4.93 usec
P1 14.79 usec
PLW1 9.92000008 W

F2 - Processing parameters
SI 32768
SF 400.1300090 MHz
WDW no
SSB 0
LB 0 Hz
GB 0
PC 1.00



4.415
4.400
4.388
4.300
4.253
4.246
4.201
4.189
4.179
4.169
4.163
4.152
4.142
4.126
4.100
3.925
3.880
3.814
3.769
3.553
3.533
3.233
3.224
3.211
3.199
3.174
3.150
3.113
3.090
3.069
3.048
3.027
2.934
2.827
2.807
2.695
2.672
2.645
2.499
2.487
2.308
2.289
2.088
2.074
2.068
2.057
1.852
1.845
1.827
1.781
1.774
1.762
1.744
1.734
1.719
1.709



Current Data Parameters

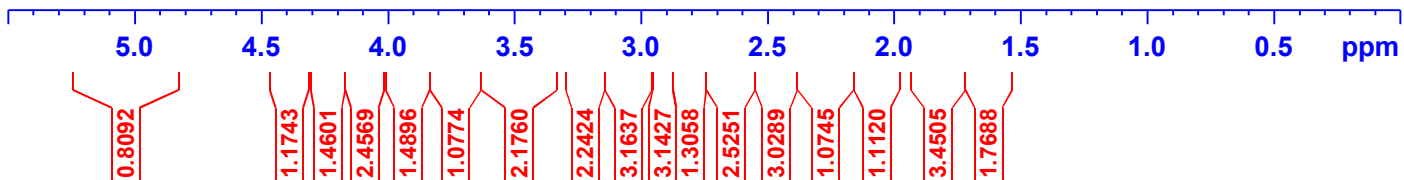
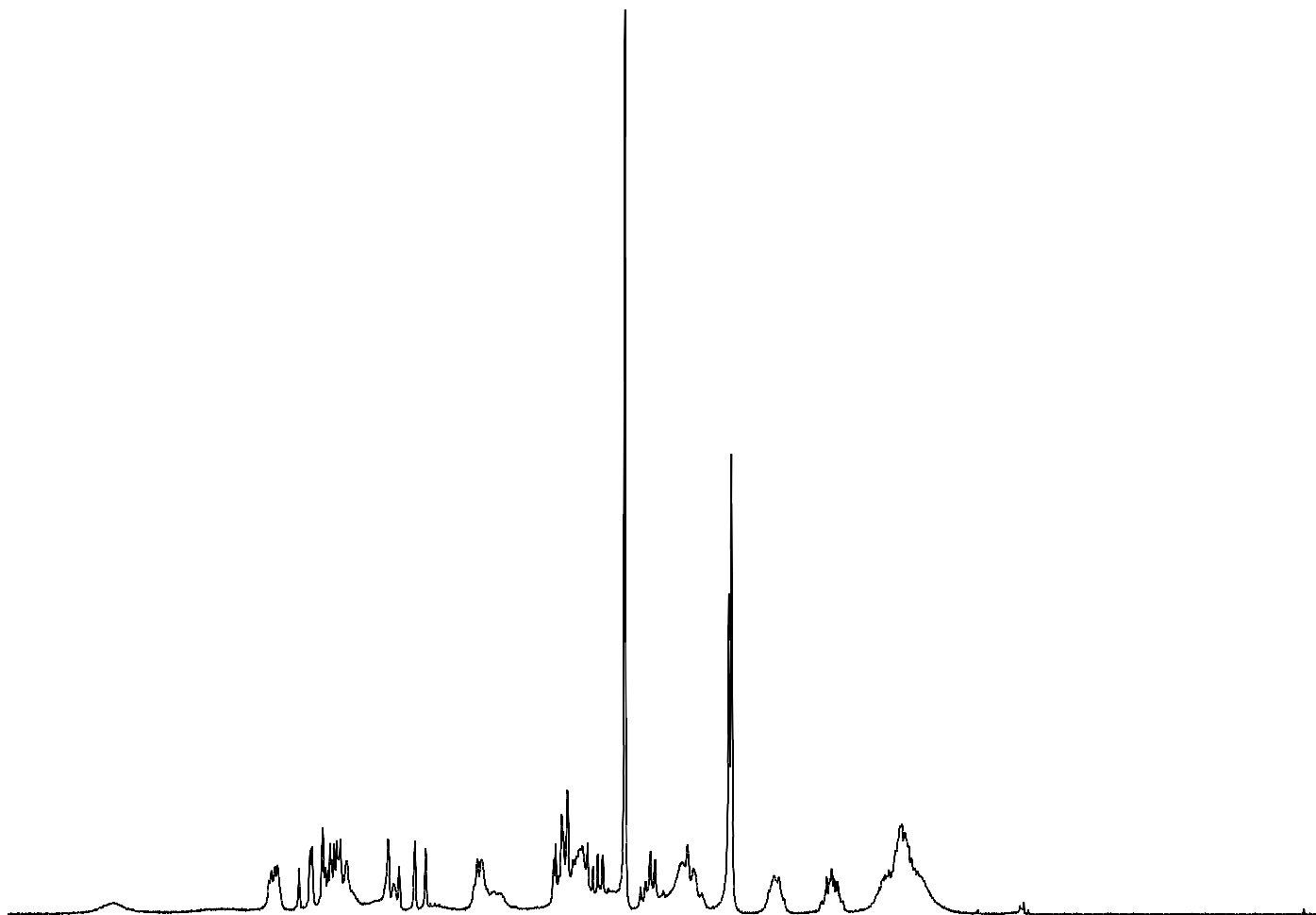
NAME NSC-819558-I1
EXPNO 1
PROCNO 1

F2 - Acquisition Parameters

Date_ 20190911
Time 16.37 h
INSTRUM spect
PROBHD Z104450_0348 (
PULPROG zg30
TD 65536
SOLVENT CDC13
NS 64
DS 2
SWH 8223.685 Hz
FIDRES 0.250967 Hz
AQ 3.9845889 sec
RG 144
DW 60.800 usec
DE 6.50 usec
TE 300.5 K
D1 1.00000000 sec
TD0 1
SFO1 400.1324710 MHz
NUC1 1H
P0 4.93 usec
P1 14.79 usec
PLW1 9.92000008 W

F2 - Processing parameters

SI 32768
SF 400.1300090 MHz
WDW no
SSB 0
LB 0 Hz
GB 0
PC 1.00



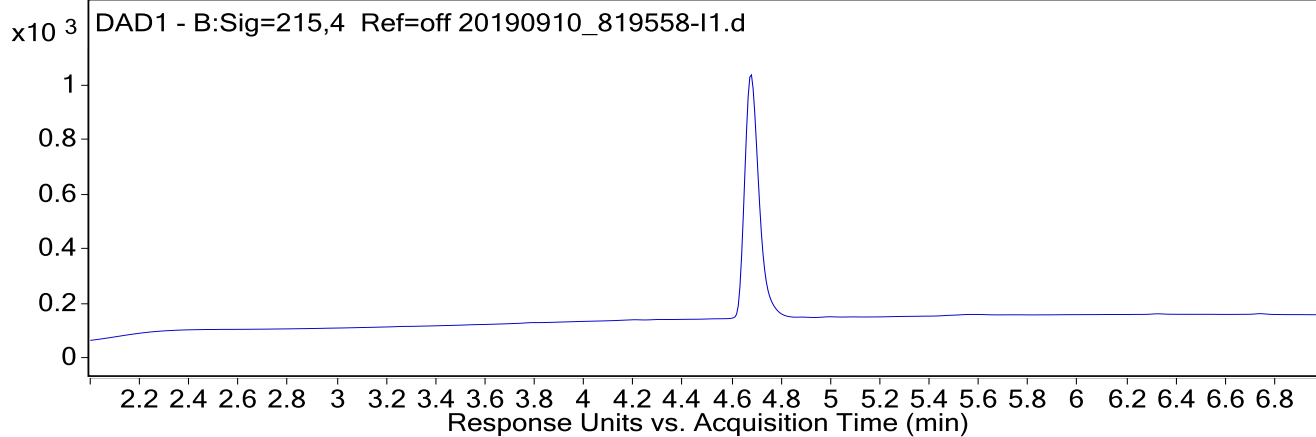
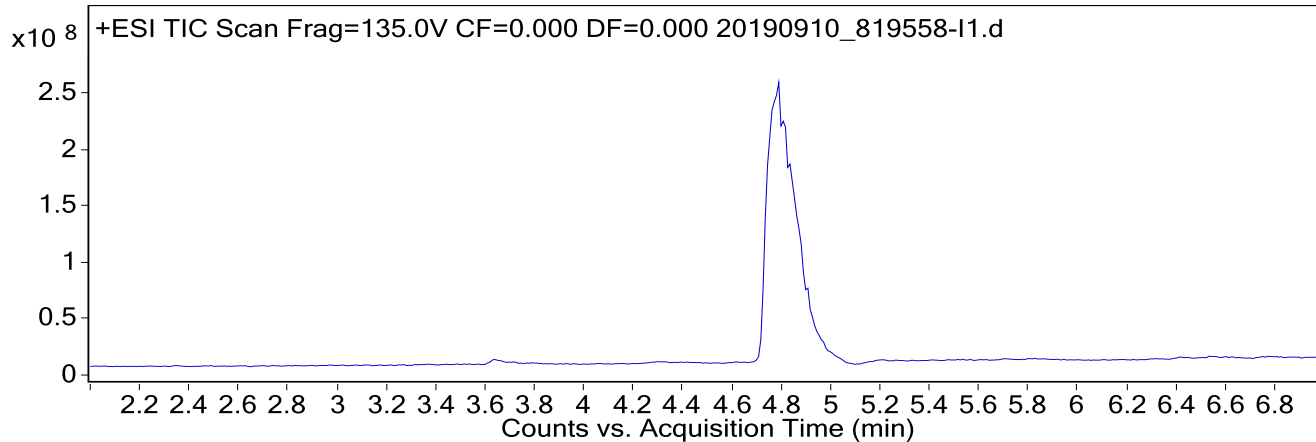
Qualitative Analysis Report

Data Filename	20190910_819558-I1.d	Sample Name	_819558-I1
Sample Type	Sample	Position	P1-A5
Instrument Name	Instrument 1	User Name	
Acq Method	Leidos_10min_pos.m	Acquired Time	9/10/2019 12:26:27 PM
IRM Calibration Status	Not Applicable	DA Method	uv integration test.m
Comment			

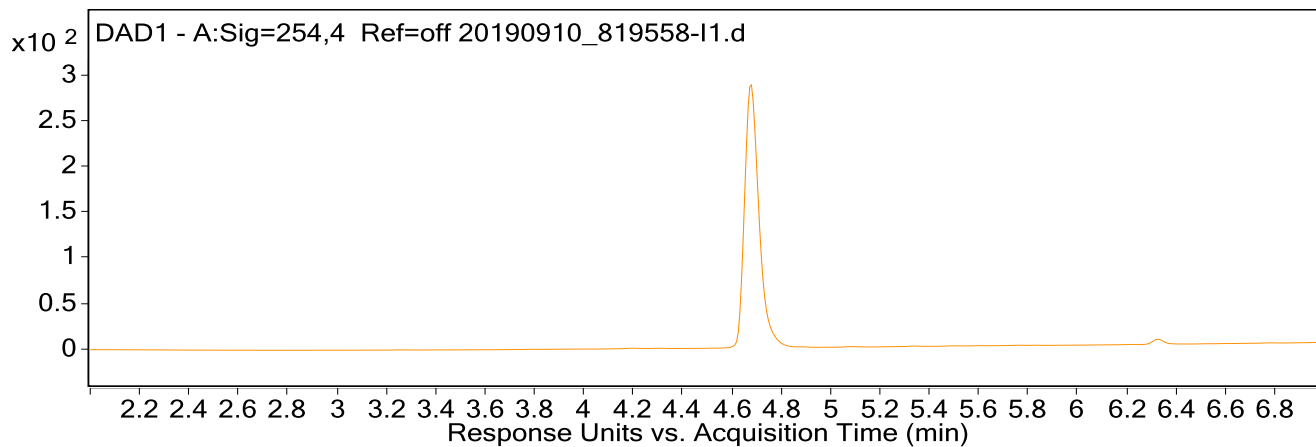
Sample Group		Info.	
Stream Name	LC 1	Acquisition SW	6400 Series Triple
		Version	Quadrupole B.08.00

User Chromatograms

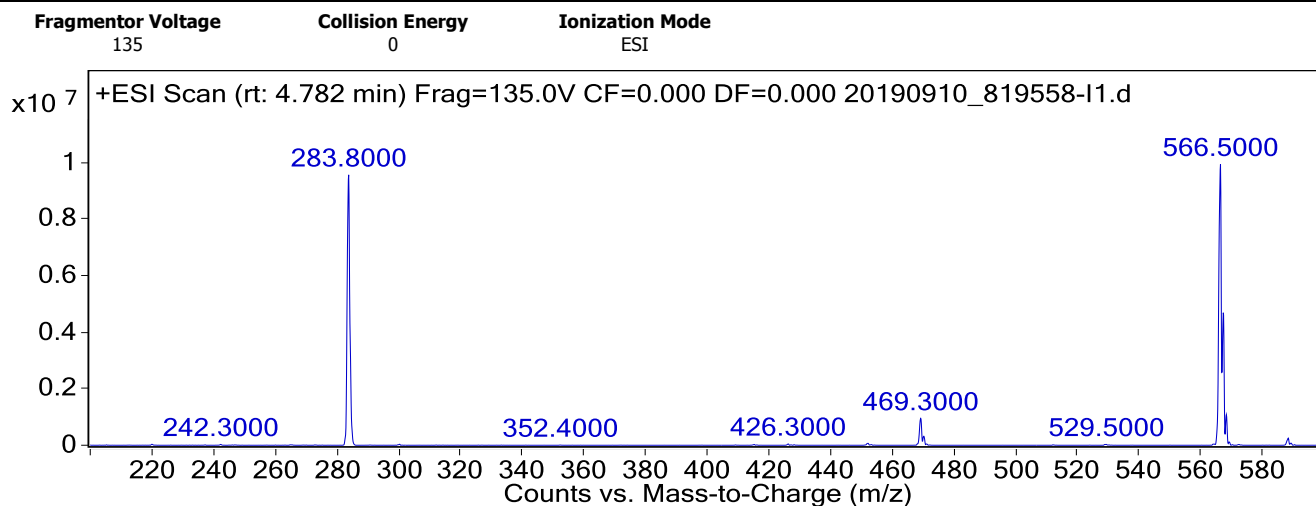
Fragmentor Voltage 135 **Collision Energy** 0 **Ionization Mode** ESI



Qualitative Analysis Report



User Spectra



Peak List

<i>m/z</i>	<i>z</i>	Abund
199.0		118616
283.8		9561917
469.3	1	944171
470.3	1	319057
566.5		9935573
567.4	1	4685065
568.4	1	1075099
569.3		117511
588.5		252467
589.4		74847

--- End Of Report ---